

Monthly Newsletter



"NEW Acknowledgement"

ICTE 2023 - International Conference on Twice Exception



On behalf of **Consort World family**, we are proud to be invited to ICTE2023 event. We hope this will bring us closer to our goal of **changing the lives of people of determination**.

In the **Arab world**, this conference is an excellent opportunity to provide information about the challenges faced by the talented people with disability in achieving their full potential and increasing their productivity in work activities. It also aims to identify ways through which they can be supported in order to enable them to participate fully in society and contribute towards its development. Now, we have advancing assistive technology that can help them learn differently than before.

Mr. Camille Matta spoke about **"The Unknown Heroes"** he emphasized how an assistive technology can give power to the talented people with disability and turn them to be a **HERO**. Despite of their condition, they still continue to inspire others by demonstrating excellence through hardship and spreading awareness.



Our Anniversary Giveaway Winner

On **February 01, 2023**, we announced the winner as part of celebrating our 17th anniversary. The lucky winner Mrs. Ambreen visited us at our office with her twins for an AT and AAC assessment. The team selected two Quicktalker FT7 for her twins to help them communicate since they are diagnosed with moderate to severe autism. According to Ambreen, *"Personally when it comes to communication my twins are struggling. I am all up for any devices, any technology or anything that can help them communicate be it an AAC device, sign language or PECS."* She also added to her post *"I had the honor of winning a giveaway by @consortworld the MOST humble, smart and intelligent group of people working together to help the special needs community. This means the world to me and the twins. Also thanks for giving them both a device each. Very sweet and considerate of you. Let hope to work together in the future to make life better"*

Consort World Family is very grateful and happy for having you. This is one step forward to achieve our goal of changing someone's life and spread hope.



Office #1, 5th Floor, Al-Nafisi Bldg. Fahad Al-Salem St. Block 19, Qiblah, Kuwait City, Kuwait

+965 2 259 8907
kuwait@consortworld.com

www.consortworld.com

WE ARE NOW in **Kuwait** and ready to spread hope to someone's life. We are now growing and will keep reaching you to **change more lives of People with Disability**.

Watch this

Kuwait

National and Liberation Day



The **Kuwait National Day** and **Liberation Day** celebrations are here. We have different ways to communicate besides speaking

When you take a moment to think about it, AAC devices will help you to overcome the barriers and **HAVE A VOICE**



Our Training and Workshop



We had a chance to meet **Dr. Shaheena Boda** from Kids First clinic Abu Dhabi this last February 13, 2023. KidsFIRST Medical Center provides evidence-based health services to children with special needs and learning difficulties. The center is committed to providing emotional, educational and physical support for children from birth through adolescence. KidsFIRST's multidisciplinary team includes pediatricians, psychologists, occupational therapists, speech therapists, social workers, nurses, nutritionists and medical assistants.

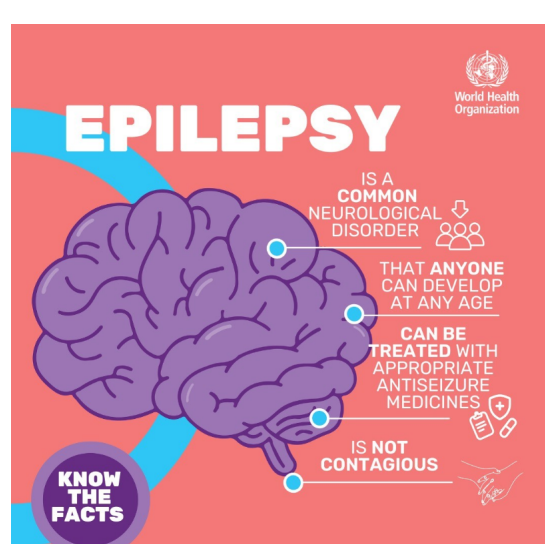
Awareness Day

Epilepsy is a chronic noncommunicable disease of the brain that affects around 50 million people worldwide. It is characterized by recurrent seizures, which are brief episodes of involuntary movement that may involve a part of the body (partial) or the entire body (generalized) and are sometimes accompanied by loss of consciousness and control of bowel or bladder function. People with epilepsy tend to have more physical problems (such as fractures and bruising from injuries related to seizures), as well as higher rates of psychological conditions, including anxiety and depression. Similarly, the risk of premature death in people with epilepsy is up to three times higher than in the general population, with the highest rates of premature mortality found in low- and middle-income countries and in rural areas.

February 13, 2023

Read more

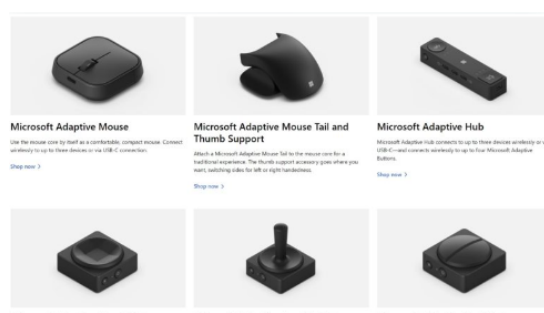
International Epilepsy Day



World Health Organization

Industry News

Microsoft's Release Of Adaptive Equipment Is Good News For People With Impairments



By Northwest Ergonomics & Assistive technology- Feb 28, 2023

Read More

Recently, Microsoft released Microsoft Adaptive Accessories. The newly-introduced trio showcases Adaptive Button (in three styles), and a core device, called the Adaptive Hub. The devices assist people in ways that other people take for granted. They help in performing computer-based tasks, such as moving the mouse cursor, double-clicking, or copying and pasting website content. Let's review some of the highlights.

Upcoming Event



REHAB EXPO 2023- The Saudi
International Exhibition
for Disability and Rehabilitation
requirement

**Riyadh International Convention and
Exhibition Center**



Want to change how you receive these emails?
you can [update your preferences](#) or [unsubscribe from this list](#).